



Merewether High School Year 7 2023

Application procedures for academically selective
high schools





Academic Selective High School

- Merewether is one of 21 fully academically selective high schools in NSW
- Selective high schools cater for academically gifted students with high potential who may otherwise be without sufficient classmates of their own academic standard.
- Selective high schools help these students to learn by grouping them with students of similar ability, using specialised teaching methods and materials. Selective high schools are unzoned so parents can apply regardless of where they live.





High Potential and Gifted Education

- Students have the capacity to learn faster
- They also have the capacity to manipulate abstract ideas and make connections to other learning
- The school's curriculum is adapted to accommodate the learning needs of our high potential and gifted students.





High Potential and Gifted Education



- Gifted and high potential students need more challenging learning with greater depth and complexity. Gifted students can have a level of cognitive function typical of students several years older, with high levels of fluid thinking, reasoning and working memory function.
- Lack of adequate challenge can contribute to social and emotional challenges. These can include boredom, disengagement, and perfectionist-type behaviours. Challenging learning experiences, positive social relationships and a supportive school environment help gifted students thrive.



High Potential and Gifted Education



- **Specific strategies are needed to help gifted students achieve their best.** Teaching practices should align the challenge, complexity, depth and pace of learning with the learning needs of gifted students. Specific strategies may include curriculum acceleration, extension and enrichment learning.
- **Gifted students benefit from explicit teaching and well-structured learning.** Gifted learners require scaffolding and structure in learning to help manage the demands of cognitive load. Explicit teaching and guided inquiry are necessary for gifted students.



Teaching Profile

- Teaching staff appointed in line with student population
- Explicit training in Gifted and Talented education with all teaching staff completing the Certificate of Gifted Education through UNSW
- Focus on Thinking Skill development
- Mixture of new thinking and experience
- Additional training and development in current educational practices and issues for all staff





Academic Achievements

HSC Results:

- Students on the state all rounders list (Band 6 in at least 10 units)
- 9 students in 2020 achieved an ATAR above 99
- 290 Band 6 and 464 Band 5 results
- Students regularly achieve state rankings including;

1 st in Geography	1 st in German Continuers	1 st in Legal Studies
4 th in Advanced English	2 nd , 7 th and 12 th in Biology	3 rd in Engineering Studies and Hospitality
5 th in Chemistry	8 th in Geography	2 nd , 4 th , 6 th and 7 th in Food Technology
10 th in Ext 2 English		
- Perfect scores in Mathematics Extension 1 and Mathematics Extension 2, Food Technology and Extension Music
- 75% of students achieve an ATAR above 90
- Student works selected to be showcased for Visual Arts in Art Express, Music in Encore, Design & Technology in Design Excellence Forum and Extension English 2 in Writer's showcase
- Accelerated HSC program for Year 11 students delivers outstanding Band 6 results





Academic Competitions and enrichment activities

- English
- Mathematics
- Science
- Geography
- History
- Technology
- Poetry
- Creative Writing
- Public Speaking
- Debating
- Business Studies
- Mock Trial
- MUNA





Creative and Performing Arts

- Wide Range of Courses:

- › Visual Arts
- › Drama
- › Music
- › Visual Design
- › Photographic and Digital Media

- Performances & Exhibitions:

- › Star Struck
- › Drama & Dance festivals
- › Young Artists' exhibitions
- › Art Express
- › Onstage
- › Choir & vocal groups
- › Band & music groups
- › Drama & Dance ensembles





Sporting Achievements

School, Zone, Regional and National representation and competition:

- Athletics
- Swimming
- Cross Country
- Water Polo
- Triathlon
- Rugby Union
- Rowing
- Aerobics
- Basketball and Netball
- Tennis
- Baseball and Softball
- Cricket
- Hockey
- Rugby League
- Soccer
- Touch Football
- OzTag



Merewether High School has a rich history of sporting excellence



Extra Curricular

- International Tours
- Star Struck
- Green Day
- Gala Days
- Chess Competitions
- Robotics
- F1 Cars
- Short Film Festival
- Many interest clubs





Parent and Community Involvement

- Highly engaged Parents and Citizens Association
- Generous support of local clubs, businesses and community service groups
- Community hire of school facilities
- School Canteen
- Parent volunteers
- Parent representation on various committees
- Year 9 Inquiry Based Learning Presentations
- Parent Learning Groups
- Attendance at school events





Curriculum Structures

- Stage 4 (Years 7 & 8)
- Stage 5 (Years 9 & 10)
- Stage 6 (Years 11 & 12)
- Electives in Years 8, 9 and 10
- HSC Acceleration – Year 10/11
- Academic Enrichment – Inquiry Based Learning Year 9
- High Performing Students Program
 - Newcastle University Extension Courses





Student Wellbeing

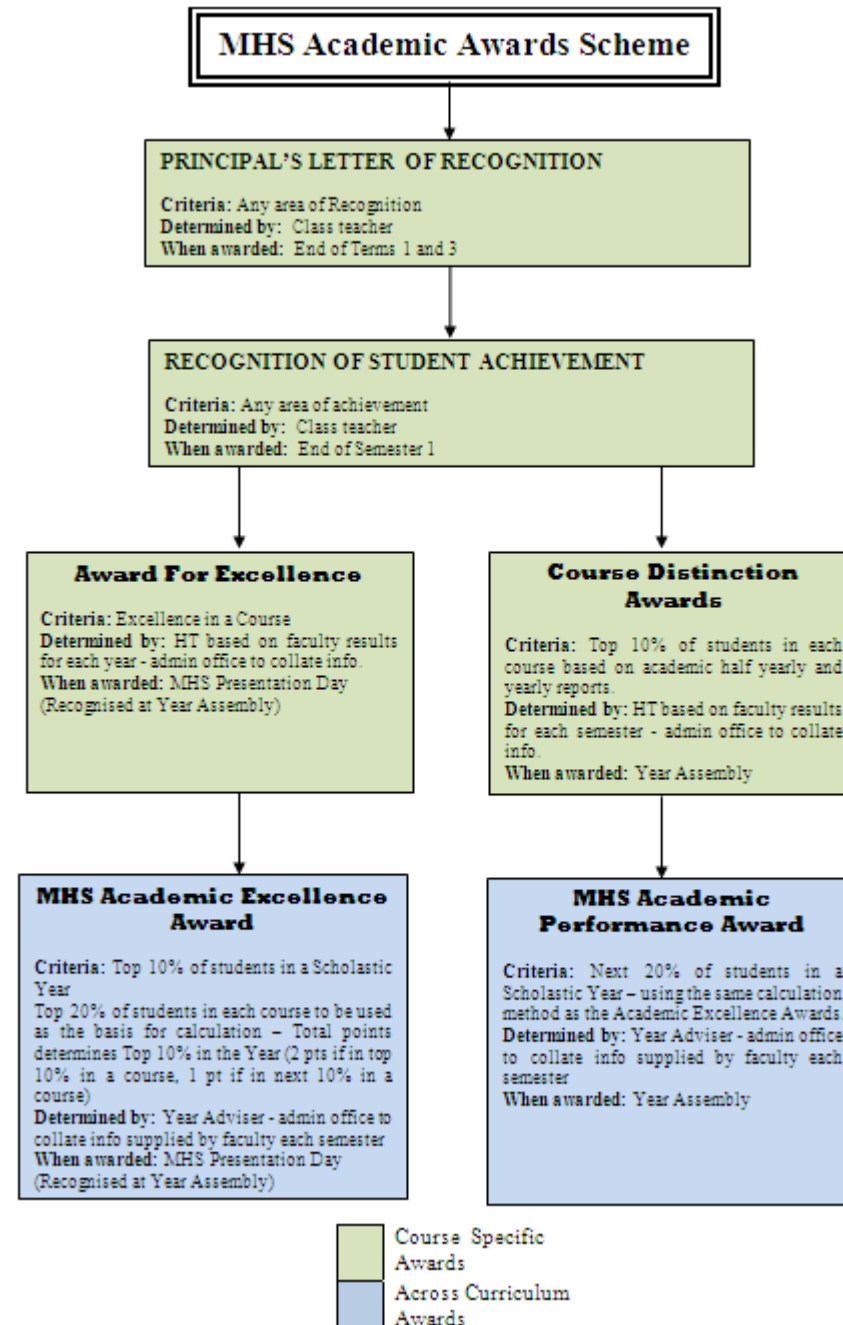
- Academic and Pastoral Wellbeing
- Growth mindset
- Year Advisers
- Head Teacher Teaching and Learning – Wellbeing
- Student Support Officer
- School Counsellors
- Deputy Principals
- School Learning and Support Team
- Numerous programs: group activities and camps, peer support, year meetings, visiting performances, student interest groups, special focus presentations...





Award System

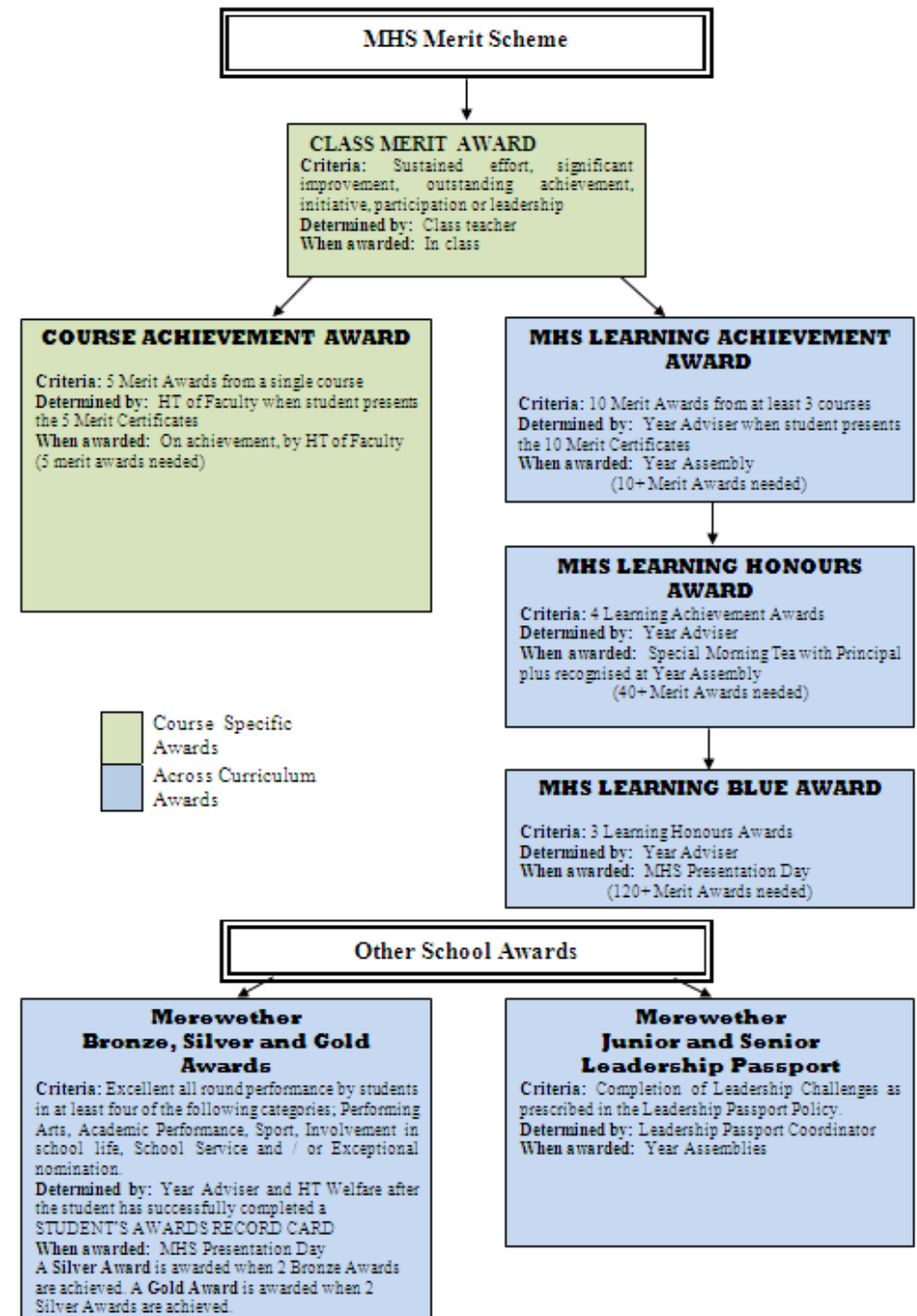
- Exceptional students in a comprehensive range of endeavours
- 2 Award Schemes operate within the school
- MHS Academic Awards
- MHS Merit Awards





Celebration and Recognition

- Letters home
- Presentation Assemblies
- School Notice Board
- School Bulletin
- Assemblies
- School Notices
- Facebook





Citizenship

- It is our belief that students of Merewether High School are not only the leaders of the future, but also the leaders of today.
- We are very active in providing opportunities for citizenship and leadership through programs that support students to develop a sense of service and social justice.






How to Apply

- The selective high school placement process for Year 7 entry is administered by the High Performing Students Unit
- The Selective High School Placement Test for placement in 2023, will be paper based with new types of questions and a different scoring system.
- Apply Online –application website opened 19th October 2021
- Online application – <https://education.nsw.gov.au/public-schools/selective-high-schools-and-opportunity-classes/year-7>
- 17th November 2021 – Application website closes. **Late applications will not be accepted.**





High Performing Students Team

Placement in selective high schools for Year 7 entry in **2023** Information for applicants

Thinking of applying for a government selective high school for Year 7 in 2023?

You must apply online at:

<https://education.nsw.gov.au/public-schools/selective-high-schools-and-opportunity-classes/year-7>



Key Dates

Application website opens:
19 October 2021

Application website closes:
17 November 2021
You must apply before this date.

Test centre and test authority advice released:
24 February 2022

Selective High School placement test:
10 March 2022

Placement outcome expected to be released:
8 July 2022

Please read this booklet carefully before applying.

There may be changes to the procedures in this document.

Check the website at education.nsw.gov.au/shs-oc regularly for updates throughout the application and placement process.

Please check the website for information before you contact the Team.

After applying, you will be able to log into your application dashboard to change details and send and receive messages.

The Selective High Schools placement process for Year 7 entry is administered by the High Performing Students Team. It is referred to as 'the Team' in this document.

Contact Details:

High Performing Students Team, NSW Department of Education
Email: shs@det.nsw.edu.au
Telephone: 1300 880 367
Facebook: <https://www.facebook.com/groups/772251106301086/>

Stages of the placement process	
Parents register, verify email, log in and then complete and submit the application online	From 19 October to 17 November 2021
Parents request reasonable adjustments for disability when applying, and upload documentation	From 19 October to 17 November 2021
Principals provide information about applicants from their school	From 19 November to 1 December 2021
Parents verify the primary school the student will attend in 2022	Late January 2022
Parents are sent test centre information and the 'Test authority'	On 24 February 2022
Students sit the Selective High School Placement Test for entry to Year 7 in 2023. 'Report of academic merit' due for interstate or overseas students	On 10 March 2022
Requests for special consideration for illness/misadventure are submitted	By 17 March 2022
Last day to change selective high school choices	24 April 2022
School selection committees meet	In May and June 2022
Placement outcome expected	8 July 2022
Parents can submit Results enquiries	5 working days after outcomes release, mid-July 2022
Parents can submit appeals	15 working days after outcomes release, late-July 2022
Parents accept or decline offers	From July 2022 to at least the end of Term 1 2023
Appeals outcomes are sent to parents who appealed	Early-October 2022
Names of students who have accepted offers are withdrawn from any higher choice school reserve lists they may be on	At 3:00pm on 14 December 2022

<https://schoolsequella.det.nsw.edu.au/file/eafa8804-3a28-4730-9fc0-0ee49dd90f83/1/SHS-application-information.pdf>



Test Information

The test in 2022 is expected to be paper-based.

The test has multiple-choice questions in reading, mathematical reasoning and thinking skills as well as a test of writing.

The test is designed to measure ability rather than performance on the curriculum.

Practice questions for the new test are published at

<https://education.nsw.gov.au/public-schools/selective-high-schools-and-opportunity-classes/year-7/the-test>

Encourage your child to practise answering the questions on the sample answer sheet.



What Happens Next?



Date: _____ Our reference: _____
Dear | _____
I refer to your application for Year 7 entry to a selective high school in 2016 on behalf of:

Student Number: _____
I am pleased to offer your child a Year 7 place in 2016 at:
Merewether High School
Accompanying this advice is an 'Outcome information bulletin'. Attached also is an 'Outcome information bulletin'.
You must read this document as it explains the terms used in the outcome advice and the placement process.
It also tells you what you need to do. The bulletin also explains how to get enrolment details from
the school's website.

Please complete and return the accompanying offer response form by the due date.

School	Outcome	Reserve Number
Merewether High School	Offer	

Yours sincerely
M. Pollak
(Ms) Magda Pollak
Leader, High Performing Students Unit

The student listed above achieved a calculated profile score of 209.62 out of 300.
The highest calculated profile score achieved this year was 276.51 out of 300.
The average calculated profile score of all candidates statewide was 179.98 out of 300.
Calculated profile scores combine test scores and school assessment scores.
Please note that calculated profile scores can be adjusted by individual selection committees and appeals
panels. It is not possible to show specific adjustments to scores in this document.
Our web-site, www.schools.nsw.edu.au/shsplacement, contains further information concerning calculated
profile scores. Click on 'Score processing'.

Transition Program

- Students come from many different Primary Schools (72 schools in 2021)
- School Visits
- Information Session and Tours
- GATS Challenge Day
- Orientation Day
- Travel Training



Further Information

Further
Information

- Specific information about Merewether High School is available via our school website
www.merewether-h.schools.nsw.edu.au
- Questions – please discuss with your current primary school Principal
- NSW Public Schools - selective high school placement
<https://education.nsw.gov.au/public-schools/selective-high-schools-and-opportunity-classes/year-7>